

# ELK DRAWS

## APPLICATION AND LICENCE LIMITS FOR ELK HUNTERS

**Residents** – may apply in only one of the following elk draws: Antlered Elk Special Licence, Antlerless Elk Special Licence, Either Sex Elk Special Licence, or WMU 300 Elk Special Licence. In addition, hunters may apply in the WMU 212 Antlerless Elk Special Licence Draw.

**Non-residents (Canadian)** – may apply for only the Antlered Elk Special Licence and must apply with a resident (maximum of 1 non-resident per resident).

Hunters may not possess more than 1 elk licence, with the exception of the WMU 212 Antlerless Elk Archery Licence and the WMU 212 Antlerless Elk Special Licence.

### DRAW CODE 18

## Antlered Elk Special Licence Draw

**Residents and Non-residents (Canadian)**

**Prices (GST not included): Resident \$39.95 Non-resident \$154.66**

**6-POINT ELK** An Antlered Elk Special Licence authorizes the holder to hunt a 6-point or larger antlered elk in 1 of the following WMUs during its listed season. See page 41 for definition of “6-point elk.”

Resident hunters successful in drawing an Antlered Elk Special Licence may designate a resident youth or senior partner to hunt with them and share the special licence tag. (See page 11 for details)

Season	Select 1 of these WMUs
September 17 – November 30	404, 406, 408
November 1 – November 30	509
September 17 – November 30 <b>Archery:</b> August 25 – September 16	412, 414, 416, 417, 418, 420, 422, 426, 428, 430, 432, 434

**ANTLERED ELK** An Antlered Elk Special Licence authorizes the holder to hunt an antlered elk in 1 of the following WMUs or groups of WMUs (in parentheses) during its listed season. If applying for a WMU group, use the first WMU listed to identify the group. See page 41 for definition of “antlered.”

Season	Select 1 (or the first) of these WMUs
November 1 – November 30	110, (132, 136, 138), (162, 163, 164, 166), (151, 152), (156, 158, 160), (200, 202, 203, 232, 234), (252, 254, 258, 260), (236, 238, 256), (206, 222, 226, 244, 246), (208, 210, 220), (204, 228, 230), (240, 242)
December 1 – January 1, 2021 (Monday to Saturday only)	116, 118, 119
November 1 – November 23 <b>Archery:</b> October 17 – October 31	936 <sup>2</sup>

An Antlered Elk Special Licence authorizes the holder to hunt an antlered elk in 1 of the following WMUs or groups of WMUs (in parentheses) during 1 of its listed seasons.

WMU	Season
102	September 1 – September 23
	September 24 – October 8
	October 9 – October 23
104, 108	September 1 - September 30
	October 1 – October 24
	October 25 – November 16
	November 17 – December 20

*Antlered Elk Special Licence Draws continued on next page*

WMU	Season
116, 118, 119, 624 <sup>1</sup> (WMU 624 – Monday to Friday)	November 2 – November 6
	November 9 – November 13
	November 16 – November 20
	November 23 – November 27
(124, 128, 142, 144, 148, 150)	September 1 – September 30
	October 1 – October 24
	October 25 – November 16
	November 17 – December 20
	January 1 – January 20, 2021
732 – CFB Suffield	November 16 – November 18
	November 23 – November 25
	January 11 – January 13, 2021
	January 18 – January 20, 2021
	January 25 – January 27, 2021

<sup>1</sup> Prior to hunting in Cypress Hills Provincial Park all hunters must obtain a firearm discharge permit and view an orientation session. Please visit <https://www.albertaparks.ca/albertaparksca/visit-our-parks/activities/hunting/firearms-discharge-permits/> for more information.

<sup>2</sup> According to the Provincial Parks (General) Regulation, a hunter is required to have a firearm discharge permit to hunt within a Provincial Park and Provincial Recreation Area. This regulation applies to all of the Provincial Parks and the majority of the Provincial Recreation Areas in Alberta where hunting is allowed. Please note WMU 936: Cooking Lake-Blackfoot Provincial Recreation Area and WMU 624: Cypress Hill Provincial Park do require orientations, please visit <https://www.albertaparks.ca/albertaparksca/visit-our-parks/activities/hunting/firearms-discharge-permits/> for more information.

## DRAW CODE 19

**Residents Only**

## Antlerless Elk Special Licence Draw

**Price (GST not included): \$39.95**

An Antlerless Elk Special Licence authorizes the holder to hunt an antlerless elk in 1 of the following WMUs or groups of WMUs (in parentheses) during its listed season. If applying for a WMU group, use the first WMU listed to identify the group. See page 41 for definition of “antlerless.”

Resident hunters successful in drawing an Antlerless Elk Special Licence may designate a resident youth or senior partner to hunt with them and share the special licence tag. (See page 11 for details)

Season	Select 1 (or the first) of these WMUs
December 1 – January 1, 2021 (Monday to Saturday only)	116, 118, 119
September 17 – November 30	330, 352, 400, 402, 404, 406, 408, 438 <sup>2</sup> , 439, 441 <sup>3</sup> , 444 <sup>4</sup>
September 17 – December 20	340, 342, 344 <sup>5</sup>
November 1 – December 20	224, 334, 336, 504, 506, 509
November 1 – November 23 <b>Archery:</b> October 17 – October 31	936 <sup>6</sup>
November 1 – January 20, 2021	110, (132, 136, 138) (162, 163, 164, 166), (151, 152), (156, 158, 160), (200, 202, 203, 232, 234), (252, 254, 258, 260), (236, 238, 256), (206, 222, 226, 244, 246), (208, 210, 220), (204, 228, 230), (240, 242)

<sup>1</sup> Prior to hunting in Cypress Hills Provincial Park all hunters must obtain a firearm discharge permit and view an orientation session. Please visit <https://www.albertaparks.ca/albertaparksca/visit-our-parks/activities/hunting/firearms-discharge-permits/> for more information.

<sup>2</sup> This season applies only to that portion of WMU 438 that lies northwest of Highway 16 and southwest of Highway 40. Refer to the applicable map on page 26.

<sup>3</sup> This season applies only to that portion of WMU 441 that lies east of the Smoky River and southwest of the Muskeg River. Refer to the applicable map on page 26.

*footnotes continued on next page*

- <sup>4</sup> This season applies only to that portion of WMU 444 that lies west of the Smoky River and north of Beaverdam Road. Refer to the applicable map on page 26.
- <sup>5</sup> This season applies only to that portion of WMU 344 south of Wildhay River and Polecat Haul Road and west of Willow Creek Haul Road. Refer to the applicable map on page 26.
- <sup>6</sup> According to the Provincial Parks (General) Regulation, a hunter is required to have a firearm discharge permit to hunt within a Provincial Park and Provincial Recreation Area. This regulation applies to all of the Provincial Parks and the majority of the Provincial Recreation Areas in Alberta where hunting is allowed. Please note WMU 936: Cooking Lake-Blackfoot Provincial Recreation Area and WMU 624: Cypress Hill Provincial Park do require orientations, please visit <https://www.albertaparks.ca/albertaparksca/visit-our-parks/activities/hunting/firearms-discharge-permits/> for more information.

An Antlerless Elk Special Licence authorizes the holder to hunt an antlerless elk in 1 of the following WMUs or groups of WMUs (in parentheses) during 1 of its listed seasons.

WMU	Season
102	September 1 – September 23
	September 24 – October 8
	October 9 – October 23
104, 108	September 1 - September 30
	October 1 – October 24
	October 25 – November 16
	November 17 – December 20
116, 118, 119, 624 <sup>1</sup> (WMU 624 – Monday to Friday)	November 2 – November 6
	November 9 – November 13
	November 16 – November 20
	November 23 – November 27
(124, 128, 142, 144, 148, 150)	September 1 – September 30
	October 1 – October 24
	October 25 – November 16
	November 17 – December 20
	January 1 – January 30, 2021
(214 & 314), 312	October 25 – November 20
	November 21 – December 20
	January 1 – January 20, 2021
(216 & 320) (221 & 322)	November 1 – November 25
	November 26 – December 20
	January 1 – January 20, 2021
302-306, 308, 310	October 25 – December 20
	December 21 – January 20, 2021
318, 324, 332	November 1 – November 25
	November 26 – December 20
337, 338 <sup>6</sup> , 348, 500-502, 505, 507, 508, 510, 511, 514	November 1 – December 20
	December 21 – January 20, 2021
346, 357-360, 520-523, 526, 527, 537, 544	September 17 – October 31
	November 1 – December 20
	December 21, 2020 – January 20, 2021
353-356	September 17 – October 31
	November 1 – December 20

**IMPORTANT:** See page 21 for application and licence limitations for elk hunters.

WMU	Season
732 – CFB Suffield	November 16 – November 18
	November 23 – November 25
	January 11 – January 13, 2021
	January 18 – January 20, 2021
	January 25 – January 27, 2021

## 2020 CFB Suffield Elk Hunt Information

**CFB Suffield's access policy restricts access to all persons under the age of 18.**

CFB Suffield is used for general military training including live firing of various types of artillery, mortars, rockets, bombs and small arms. Unlike other training areas in Canada, these munitions may have been fired anywhere within CFB Suffield and may continue to pose a danger to those who enter. Likewise, CFB Suffield is much larger and much more challenging to navigate within than any other training area in Canada. For these reasons, hunters are required to follow special range-specific regulations for their own safety. **The Base reserves the right to cancel scheduled seasons without notice.**

### Vehicle Access and Search

CFB Suffield roads and trails are very rough and not suited to typical highway passenger vehicles. Four-wheel-drive vehicles with

good mud and snow tires are highly recommended. A valid driver's licence, vehicle registration and proof of valid insurance are required to access the Base. In addition, the hunter must register the make, model and calibre of their hunting rifle they will be using. Please have documents ready for inspection on arrival at the Hunter Check Station (HCS) to minimize delays for everyone. All persons and vehicles entering and leaving the Base are subject to search.

### Check-in/Check-out Procedures

1. All hunters must report daily for a Safety Briefing. Anyone late for the safety briefs for that day will not be allowed to hunt. The HCS will be open until all hunters have checked out. Failure to check out will result in loss of access privileges.

2. Licence holders will be restricted to specific hunting areas at all times while hunting at CFB Suffield. These areas will be monitored by military personnel and patrolled by Alberta Fish and Wildlife Officers. Failure to stay within the assigned area will result in loss of access privileges.

3. Hunters must check out at the HCS prior to leaving CFB Suffield and the end of each day.

### Military Requirements

1. Military use of the Base is paramount and subject to change on short notice.

2. All hunters must receive a Safety Briefing and sign a liability Waiver before being given access privileges.

3. Off-Highway Vehicles (snowmobiles, all terrain vehicles etc) are not permitted within CFB Suffield during this special hunt.

4. All persons in the hunting party must wear blaze orange or solid red outer wear to increase their visibility.

5. No overnight camping and no open fires are allowed.

6. No alcohol or drugs for which the person does not have a prescription are allowed on the Base and any person in violation or under their influence will result in the loss of access privileges and potential criminal charges.

7. Due to liability issues the military will not assist hunters with vehicles that are stuck or have mechanical problems. Hunters must make their own towing arrangements.

## Online Hunter Education Certification

Alberta's award winning Conservation Education Program is available online!



**This comprehensive, user-friendly and interactive online hunter certification program covers important topics including:**



- Role of the Hunter
- Hunting Ethics
- Wildlife Management & Conservation
- Wildlife Identification
- Clothing & Equipment
- Firearms
- Bow Hunting
- Survival
- Field Techniques
- First Aid
- Hypothermia
- Legal Responsibilities





**Take your course and exam online.  
View a demo and sign up today!**

**[www.aheia.com](http://www.aheia.com)**

**DRAW CODE 41**

**Either Sex Elk Special Licence Draw**

**Residents Only**

**Price (GST not included): \$39.95**

An Either Sex Elk Special Licence authorizes the holder to hunt either an antlered or antlerless elk in the specified WMUs during the specified time period. See page 41 for definitions of “antlered” and “antlerless.”

Resident hunters successful in drawing an Either Sex Elk Special Licence may designate a resident youth or senior partner to hunt with them and share the special licence tag. (See page 11 for details)

WMU	Season
(728, 730) <sup>1</sup>	November 26 – November 28 (Muzzle loader, bow and arrow) November 30 – December 12 (Rifle or other legal weapon)

<sup>1</sup> Hunters applying for WMUs (728-730) should read page 20 for rules and information about hunting Camp Wainwright. A licence for Camp Wainwright will be valid in both WMUs 728 and 730. Please use draw code 728 to identify this choice of area.

**IMPORTANT: See page 21 for application and licence limitations for elk hunters.**

**DRAW CODE 21**

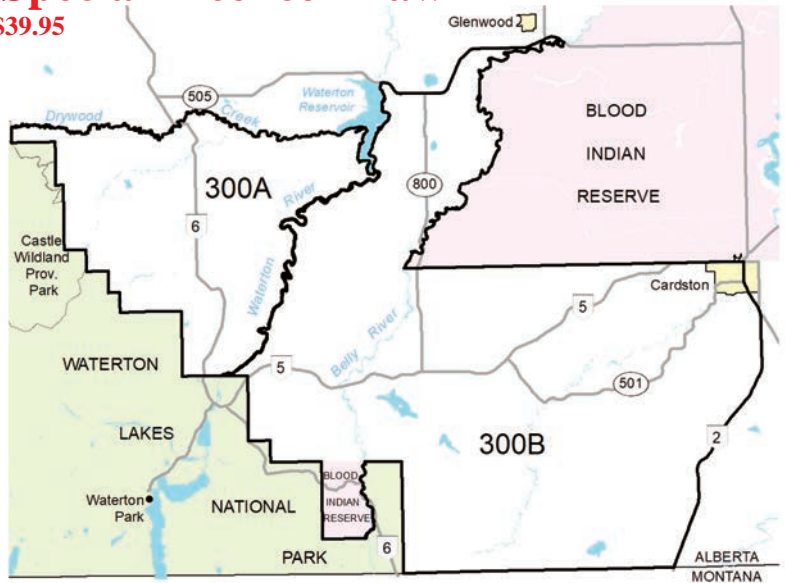
**WMU 300 Elk Special Licence Draw**

**Residents Only**

**Price (GST not included): \$39.95**

A WMU 300 Elk Special Licence authorizes a Resident to hunt a 3-point or larger elk or an antlerless elk in the specified area of WMU 300 (Area A or Area B) during the time period specified on the licence. See page 41 for definitions of “3-point” and “antlerless” elk. You may apply for a 3-point or antlerless licence, as indicated by the codes shown below.

Resident hunters successful in drawing a WMU 300 Elk Special Licence may designate a resident youth or senior partner to hunt with them and share the special licence tag. (See page 11 for details)



Season	Select 1 of these Codes			
	Area A		Area B	
	3-Point	Antlerless	3-Point	Antlerless
September 9 – October 24	832	835	837	993
October 25 – December 24	833	873	838	994
December 25, 2020 – February 21, 2021	834	836	839	995



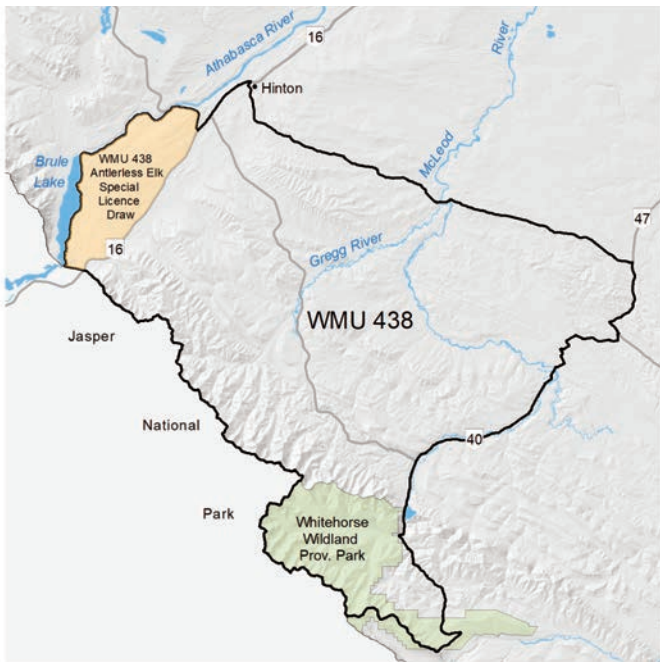
A WMU 212 Antlerless Elk Special Licence authorizes the holder to hunt an antlerless elk in WMU 212 Monday to Sunday only during one of the specified time periods. See Page 41 for definition of “antlerless”.

Hunters are required to carry written permission from the landowner allowing access while hunting under this licence.

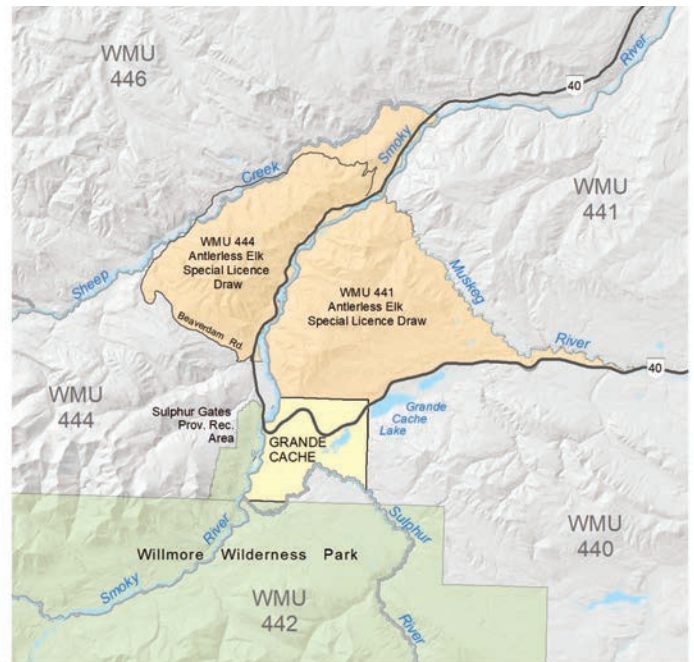
Resident hunters successful in drawing a WMU 212 Antlerless Elk Special Licence may designate a resident youth or senior partner to hunt with them and share the special licence tag. (See page 11 for details)

WMU	Season
212 (Primitive Weapon - muzzle loader, shotgun, cross-bow, bow and arrow)	December 1 - December 20
	January 1 - January 20, 2021

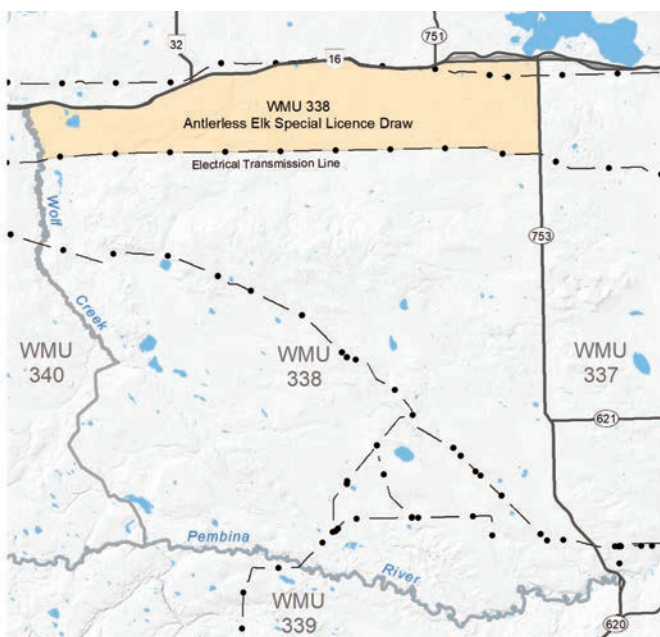
**Antlerless Elk Special Licence Draw WMU 438 Map**



**Antlerless Elk Special Licence Draw WMU 441 & 444 Map**



**Antlerless Elk Special Licence Draw WMU 338 Map**



**Antlerless Elk Special Licence Draw WMU 344 Map**

