

# ZONE 2 Parkland-Prairie

■ The Parkland-Prairie consists approximately of the southeastern quarter of the province, east of Highway 2 from the Montana border to the North Saskatchewan River. Four major rivers that start in the mountains flow through the Parkland-Prairie. Shallow lakes and reservoirs are also found in the Parkland-Prairie.

The Parkland-Prairie two Watershed Units are the Milk and South Saskatchewan rivers, including portions of the Oldman and Bow rivers (PP1), and the Red Deer, Battle and North Saskatchewan rivers (PP2).

## PP1 WATERSHED UNIT REGULATIONS

■ The Milk River watershed, and the South Saskatchewan River watershed upstream to Secondary Road 509 on the Oldman River near Coalhurst, including the St. Mary River watershed, and upstream to Highway 24 on the Bow River near Carseland.

### BAIT FISHING

- Fishing with Bait, including Bait Fish in PP1 lakes and streams is allowed except at locations listed with Bait Bans under site specific regulations.

**Alberta Fish and Wildlife may implement time of day angling restrictions in this watershed unit in response to low stream flows and warmer water temperatures. Please see the Important Information page and My Wild Alberta webpage for more information.**

**Mainstem of a river:** includes the mainstem channel and any side channel, oxbows, riparian flow channels, and plunge pools below spillways.

### PP1 Default Sportfishing Regulations

- The names of most PP1 lakes and streams are listed alphabetically in the site specific regulation tables on the following pages.
- Smaller streams may not be listed, but may be included as tributaries to a listed larger stream.
- If a listed waterbody does not have a season listed, it is CLOSED to fishing during that period.
- If a PP1 lake, reservoir, river, stream or species is not listed, follow the default regulations below.
- General regulation stocked trout lakes are listed on page 16.

See pages 60-62  
for PP1 waterbody  
specific regulations.

LAKES	REGULATIONS	SEASON
LAKES	<ul style="list-style-type: none"> <li>• OPEN all year</li> <li>• Walleye limit 3 over 50 cm</li> <li>• Northern Pike limit 3 over 63 cm</li> <li>• Yellow Perch limit 15</li> <li>• Lake Whitefish limit 10</li> <li>• Burbot limit 10</li> <li>• Trout limit 5</li> <li>• Mountain Whitefish limit 5 over 30 cm</li> <li>• Bait allowed</li> </ul>	
STREAMS	<ul style="list-style-type: none"> <li>• OPEN May 8 to Mar. 15</li> <li>• Lake Sturgeon limit 0</li> <li>• Trout limit 2</li> <li>• Mountain Whitefish limit 5 over 30 cm</li> <li>• Walleye and Sauger limit 3</li> <li>• Walleye over 50 cm</li> <li>• Northern Pike limit 3 over 63 cm</li> <li>• Yellow Perch limit 15</li> <li>• Lake Whitefish limit 10</li> <li>• Burbot limit 10</li> <li>• Goldeye limit 10</li> <li>• Bait allowed</li> </ul>	<ul style="list-style-type: none"> <li>• CLOSED Mar. 16 to May 7</li> </ul>

**See a poacher  
Report A Poacher**

**REPORT A  
POACHER**  
www.reportapoacher.com  
1-800-642-3800

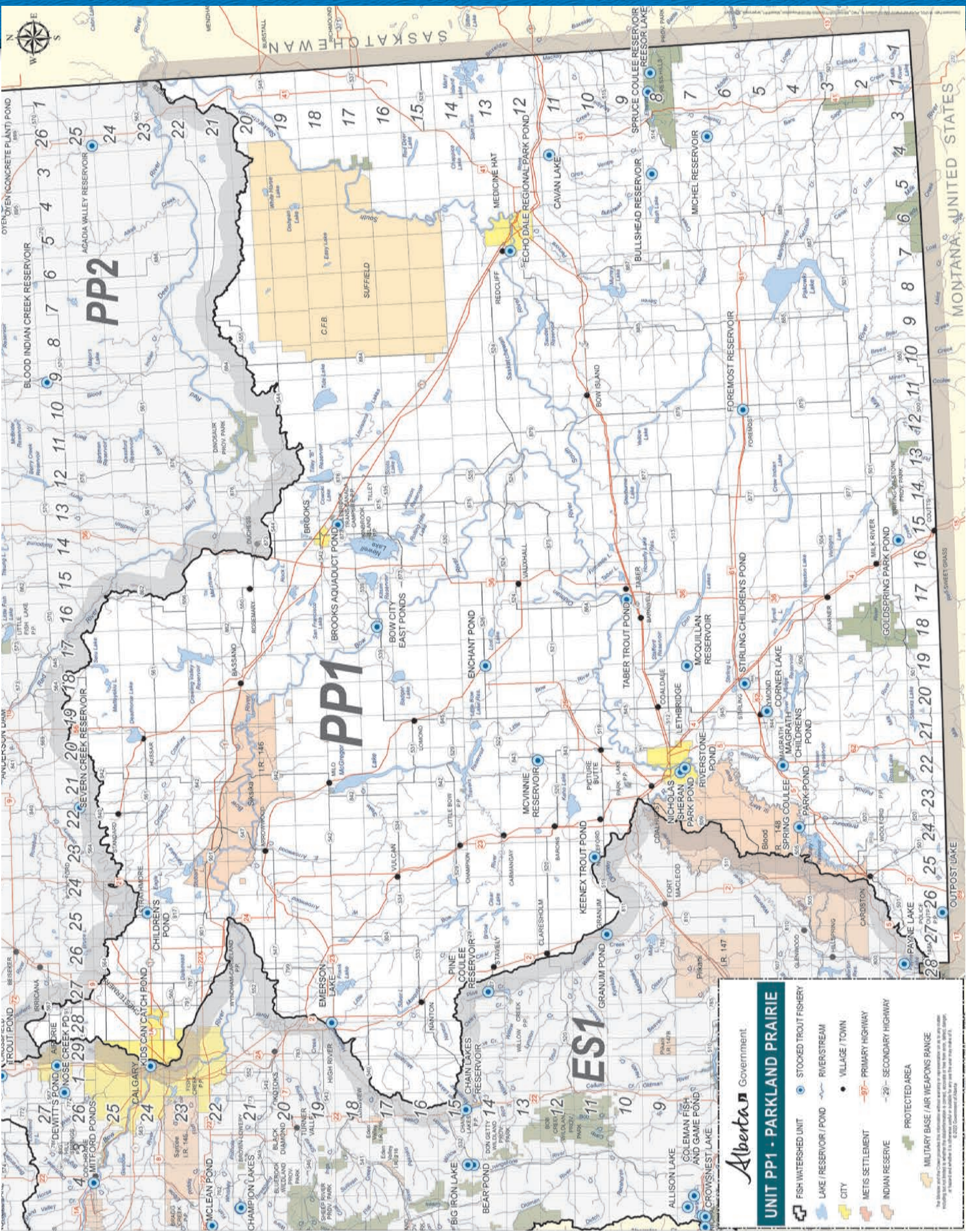
**the fishin' hole**

VISIT US ONLINE OR CALL TOLL FREE:  
**thefishinhole.com | 1.800.661.6954**

Visit our retail stores in:  
**Edmonton, Saskatoon, Winnipeg & Calgary**

100% OWNED - SINCE 1975 THEFISHINHOLECANADA THEFISHINHOLECA





PP2

PP1

ES1

**Alberta** Government

**UNIT PP1 - PARKLAND PRAIRIE**

- FISH WATERSHED UNIT
- LAKE / RESERVOIR / POND
- CITY
- METIS SETTLEMENT
- INDIAN RESERVE
- PROTECTED AREA
- MILITARY BASE (AIR WEAPONS RANGE)
- STOCKED TROUT FISHERY
- RIVER/STREAM
- VILLAGE / TOWN
- PRIMARY HIGHWAY
- SECONDARY HIGHWAY

Not shown: Other water bodies (including water bodies not shown on this map), other water bodies (including water bodies not shown on this map), other water bodies (including water bodies not shown on this map).



MONTANA UNITED STATES