

NB4 WATERSHED UNIT REGULATIONS

■ The Athabasca River watershed downstream of the north boundary of Township 78 (near Pelican River), including the Clearwater River and Christina River watersheds, and the Slave River and Lake Athabasca watersheds, including the lakes and streams north of Lake Athabasca.

BAIT FISHING

- Fishing with Bait, including Bait Fish, in NB4 lakes and streams is allowed except at locations with Bait Bans listed under site specific regulations.

Mainstem of a river: includes the mainstem channel and any side channel, oxbows, riparian flow channels, and plunge pools below spillways.

NB4 Default Sportfishing Regulations

- The names of most NB4 lakes and streams are listed alphabetically in the site specific regulation tables on the following pages.
- Smaller streams may not be listed, but may be included as tributaries to a listed larger stream.
- If a listed waterbody does not have a season listed, it is CLOSED to fishing during that period.
- If a NB4 lake, reservoir, river, stream or species is not listed, follow the default regulations below.
- General regulation stocked trout lakes are listed on page 16.

NB4 Default Sportfishing Regulations		
LAKES	<ul style="list-style-type: none"> • OPEN May 15 to Mar. 31 • Arctic Grayling limit 0 • Walleye limit 3 over 50 cm • Northern Pike limit 3 over 63 cm • Yellow Perch limit 15 • Lake Whitefish limit 10 • Burbot limit 10 • Trout limit 3 • Bait allowed 	<ul style="list-style-type: none"> • CLOSED Apr. 1 to May 14
STREAMS	<ul style="list-style-type: none"> • OPEN June 1 to Oct. 31 • Arctic Grayling limit 0 • Walleye limit 3 over 50 cm • Northern Pike limit 3 over 63 cm • Mountain Whitefish limit 5 over 30 cm • Yellow Perch limit 15 • Lake Whitefish limit 10 • Burbot limit 10 • Bait allowed 	<ul style="list-style-type: none"> • CLOSED Nov. 1 to May 31

FOR 53 YEARS, BARRY MITCHELL'S ALBERTA FISHING GUIDE HAS BEEN HELPING ALBERTA ANGLERS TO ALBERTA'S BEST FISHING!



AVAILABLE AT
CANADIAN TIRE OUTLETS
OUTDOOR RETAIL STORES
AND ON NEWSSTANDS
EVERYWHERE!

**1400+ LISTINGS
FULL PAGE
MAPS**

**DETAILED
DIRECTIONS**
TO LAKES, PONDS, RIVERS
AND STREAMS OF ALBERTA

**UPDATED LISTINGS
FOR 2023**

the fishin' hole

Visit us online or call toll free:
thefishinhole.com
1.800.661.6954

Visit us at our retail stores in:
Edmonton, Saskatoon,
Winnipeg & Calgary

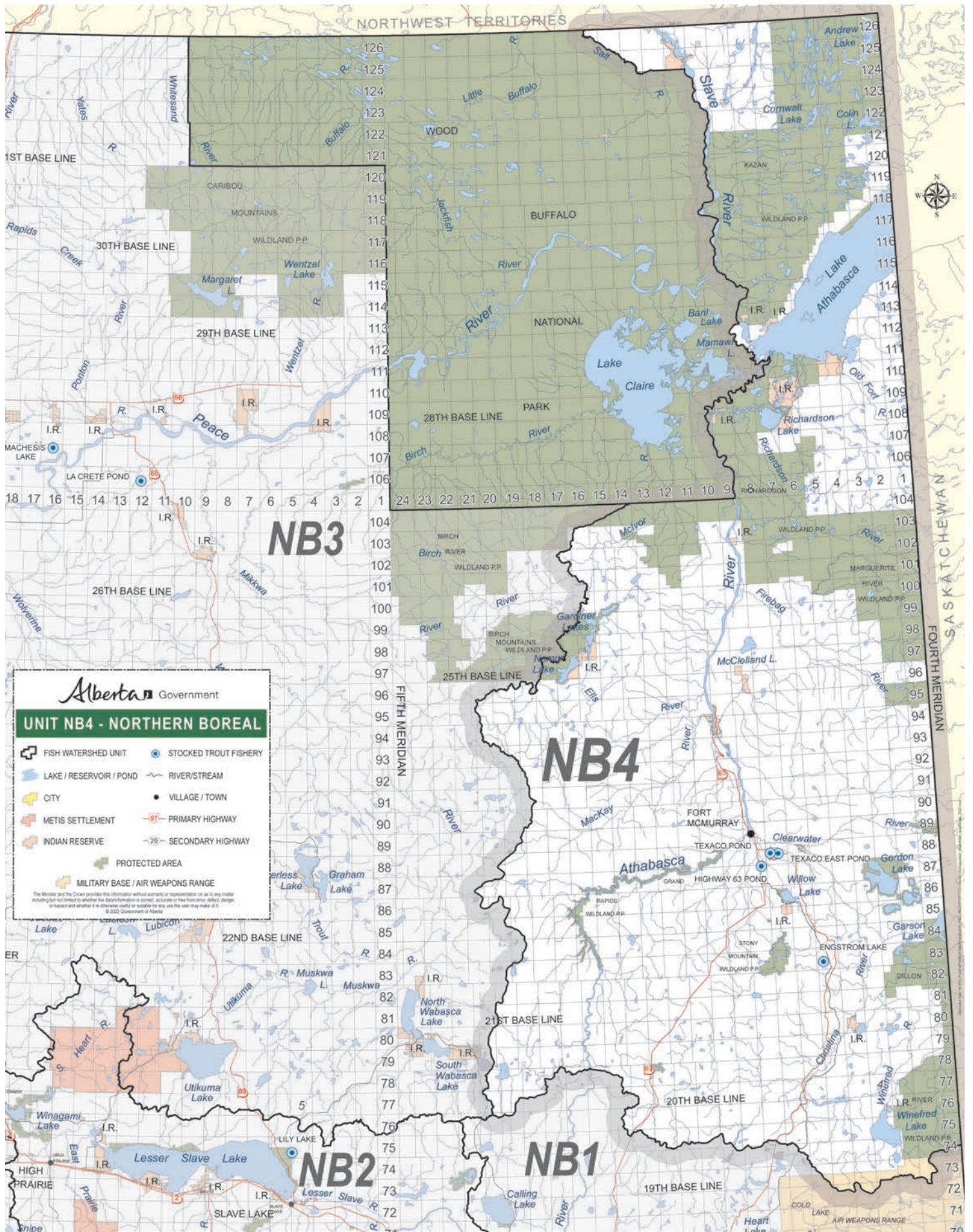
100% OWNED - SINCE 1975

THEFISHINHOLECANADA THEFISHINHOLECA

Know the regulations

Not knowing is not an excuse
Fish responsibly

REPORT A POACHER
www.reportapoacher.com
1-800-642-3800



NB3

NB4

NB2

NB1

FOURTH MERIDIAN
SASKATCHEWAN

