

NB2 WATERSHED UNIT REGULATIONS

■ The Athabasca River watershed between Sec. Rd. 813 near Athabasca and Sec. Rd. 658 near Whitecourt, including the Lesser Slave River watershed and the Pembina River watershed upstream to Highway 43 near Sangudo.

BAIT FISHING

- Fishing with Bait in NB2 streams is **NOT** allowed except at portions of a few rivers under NB2 site specific listing regulations.
- Fishing with Bait in NB2 lakes is allowed, except at lakes listed with Bait Bans under NB2 site specific regulations.
- Fishing with Bait Fish is allowed except at locations listed with Bait Bans under NB2 site specific regulations.

Mainstem of a river: includes the mainstem channel and any side channel, oxbows, riparian flow channels, and plunge pools below spillways.

NB2 Default Sportfishing Regulations

- The names of most NB2 lakes and streams are listed alphabetically in the site specific regulation tables on the following pages.
- Smaller streams may not be listed, but may be included as tributaries to a listed larger stream.
- If a listed waterbody does not have a season listed, it is **CLOSED** to fishing during that period.
- If a NB2 lake, reservoir, river, stream or species is not listed, follow the default regulations below.
- General regulation stocked trout lakes are listed on page 16.

LAKES	<ul style="list-style-type: none"> • OPEN May 15 to Mar. 31 • Arctic Grayling limit 0 • Walleye limit 3 over 50 cm • Northern Pike limit 3 over 63 cm • Yellow Perch limit 15 • Lake Whitefish limit 10 • Burbot limit 10 • Trout limit 3 • Bait allowed 	<ul style="list-style-type: none"> • CLOSED Apr. 1 to May 14
STREAMS	<ul style="list-style-type: none"> • OPEN June 1 to Oct. 31 • Arctic Grayling limit 0 • Walleye limit 3 over 50 cm • Pike limit 3 over 63 cm • Mountain Whitefish limit 5 over 30 cm • Yellow Perch limit 15 • Lake Whitefish limit 10 • Burbot limit 10 • Bait Ban 	<ul style="list-style-type: none"> • CLOSED Nov. 1 to May 31

LAG LA BICHE SPORTING GOODS LTD.



Your Outdoor Adventure Starts Here!



The Ultimate Outdoor Experience

Boats • Outboards • ATV/UTV/SUV • Motorcycles
Power Products • Accessories • Supplies

Celebrating 47 Years in Business







780-623-4145

Fax: 780-623-1744 • Mainstreet, Lac La Biche
Website: llbsports.ca • Email: sales@llbsports.ca



the fishin' hole



Visit us online or call toll free:
thefishinhole.com
1.800.661.6954

Visit us at our retail stores in:
Edmonton, Saskatoon,
Winnipeg & Calgary

100%  OWNED - SINCE 1975

 THEFISHINHOLECANADA  THEFISHINHOLECA

Size does matter

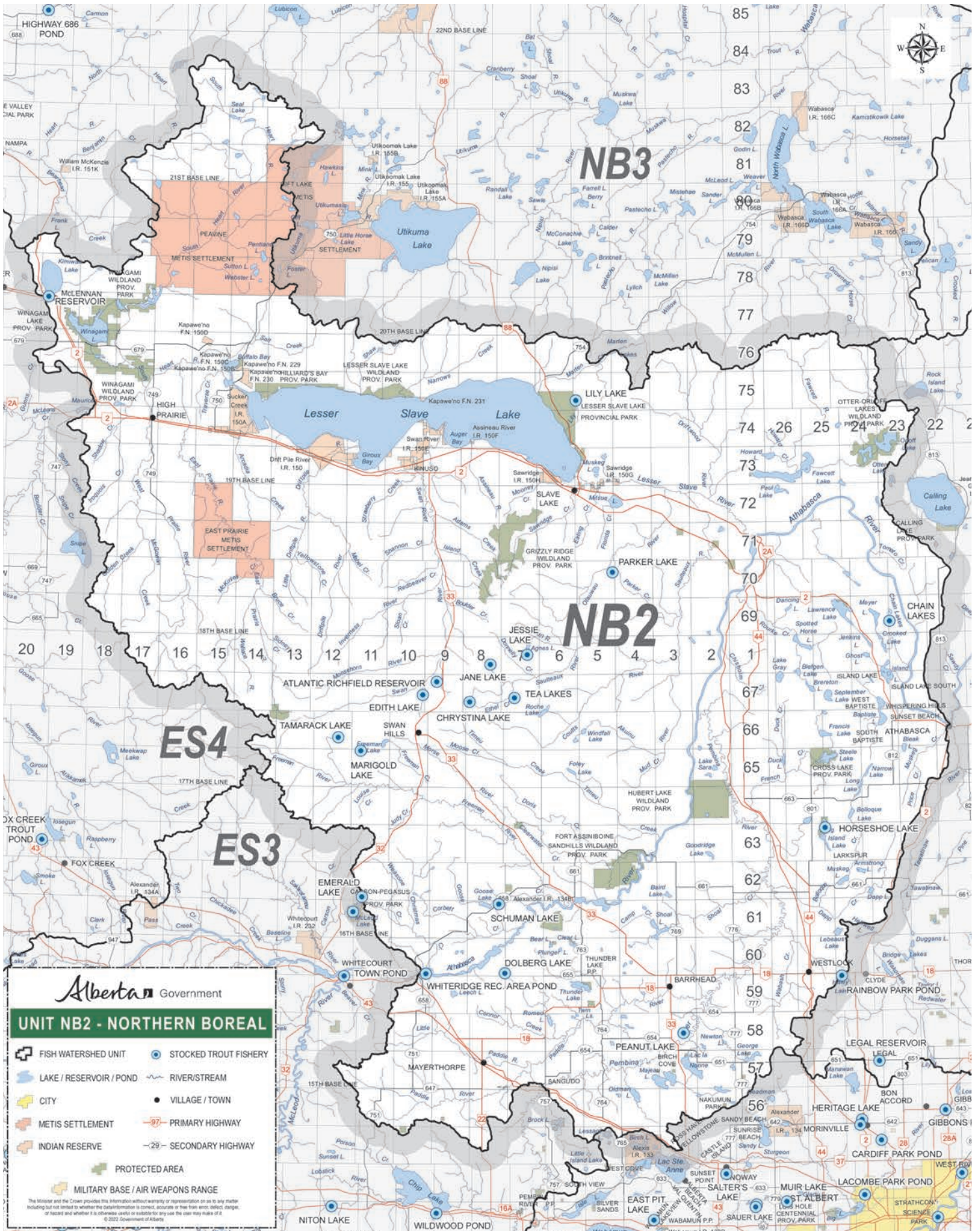


Know where to draw the line
Fish responsibly

REPORT A POACHER

www.reportapoacher.com
1-800-642-3800





NB3

NB2

ES4

ES3

Alberta Government

UNIT NB2 - NORTHERN BOREAL

- FISH WATERSHED UNIT
- STOCKED TROUT FISHERY
- LAKE / RESERVOIR / POND
- RIVER / STREAM
- CITY
- VILLAGE / TOWN
- METIS SETTLEMENT
- INDIAN RESERVE
- PRIMARY HIGHWAY
- SECONDARY HIGHWAY
- PROTECTED AREA
- MILITARY BASE / AIR WEAPONS RANGE

The Minister and the Crown provides this information without warranty or representation as to any matter including but not limited to whether the information is correct, accurate or free from error, defect, damage, or hazard and whether it is otherwise valid or suitable for any use. The user must verify it.
© 2022 Government of Alberta