

# ES4 WATERSHED UNIT REGULATIONS

■ The Smoky River watershed upstream of the 21st Base Line, and the Albright Creek watershed.

## BAIT FISHING

- Fishing with Bait in ES4 streams is restricted. Check the ES4 regulation tables for site specific regulations.
- Fishing with Bait Fish in streams is **NOT** allowed except at portions of the Smoky and Little Smoky Rivers.
- Fishing with Bait including Bait Fish in lakes is allowed except at lakes listed with Bait Bans under the ES4 site specific regulations.

Alberta Fish and Wildlife may announce short-term emergency stream closures in response to low stream flows and warmer water temperatures. Sportfishing would be suspended and fishing not allowed for the duration of the emergency period.

**Ice fishing:** Angling is not permitted through the ice; a) into beaver ponds or b) into flowing waters in ES4

**Mainstem of a river:** includes the mainstem channel and any side channel, oxbows, riparian flow channels, and plunge pools below spillways.

## ES4 Default Sportfishing Regulations

- The names of most ES4 lakes and streams are listed alphabetically in the site specific regulation tables on the following pages.
- Smaller streams may not be listed, but may be included as tributaries to a listed larger stream.
- If a listed waterbody does not have a season listed, it is CLOSED to fishing during that period.
- If a ES4 lake, reservoir, river, stream or species is not listed, follow the default regulations below.
- General regulation stocked trout lakes are listed on page 16.

LAKES	<ul style="list-style-type: none"> <li>• OPEN all year</li> <li>• Bull Trout limit 0</li> <li>• Arctic Grayling limit 0</li> <li>• Trout limit 5</li> <li>• Mountain Whitefish limit 5 over 30 cm</li> <li>• Walleye limit 3 over 50 cm</li> <li>• Northern Pike limit 3</li> <li>• Yellow Perch limit 15</li> <li>• Lake Whitefish limit 10</li> <li>• Burbot limit 10</li> <li>• Bait including Bait Fish allowed</li> </ul>		
STREAMS	<ul style="list-style-type: none"> <li>• OPEN June 1 to Aug. 31</li> <li>• Bull Trout limit 0</li> <li>• Trout and Arctic Grayling limit 0</li> <li>• Mountain Whitefish limit 5 over 30 cm</li> <li>• Walleye limit 3 over 50 cm</li> <li>• Northern Pike limit 3 over 63 cm</li> <li>• Yellow Perch limit 15</li> <li>• Lake Whitefish limit 10</li> <li>• Burbot limit 10</li> <li>• Bait Ban</li> </ul>	<ul style="list-style-type: none"> <li>• OPEN Sept. 1 to Oct. 31</li> <li>• Bull Trout limit 0</li> <li>• Trout, Arctic Grayling and Mountain Whitefish limit 0</li> <li>• Walleye limit 3 over 50 cm</li> <li>• Northern Pike limit 3 over 63 cm</li> <li>• Yellow Perch limit 15</li> <li>• Lake Whitefish limit 10</li> <li>• Burbot limit 10</li> <li>• Bait Ban</li> </ul>	<ul style="list-style-type: none"> <li>• CLOSED Nov. 1 to May 31</li> </ul>

**What's in your tacklebox?**

Licences are cheaper than fines.  
Fish responsibly.

**REPORT A POACHER**

[www.reportapoacher.com](http://www.reportapoacher.com)  
1-800-642-3800

**the fishin' hole**

Visit us online or call toll free:  
[thefishinhole.com](http://thefishinhole.com)  
1.800.661.6954

Visit us at our retail stores in:  
Edmonton, Saskatoon,  
Winnipeg & Calgary

100% OWNED - SINCE 1975

THEFISHINHOLECANADA THEFISHINHOLECA

**Online Bear Essentials Program**

- Essentials of Bear Diversity
- Bear Fare
- Essentials of Bear Encounters
- Bear Biology
- Bear Ecology
- Bear Encounters: Coming Face to Face

**ALBERTA HUNTER EDUCATION INSTRUCTORS' ASSOC.**

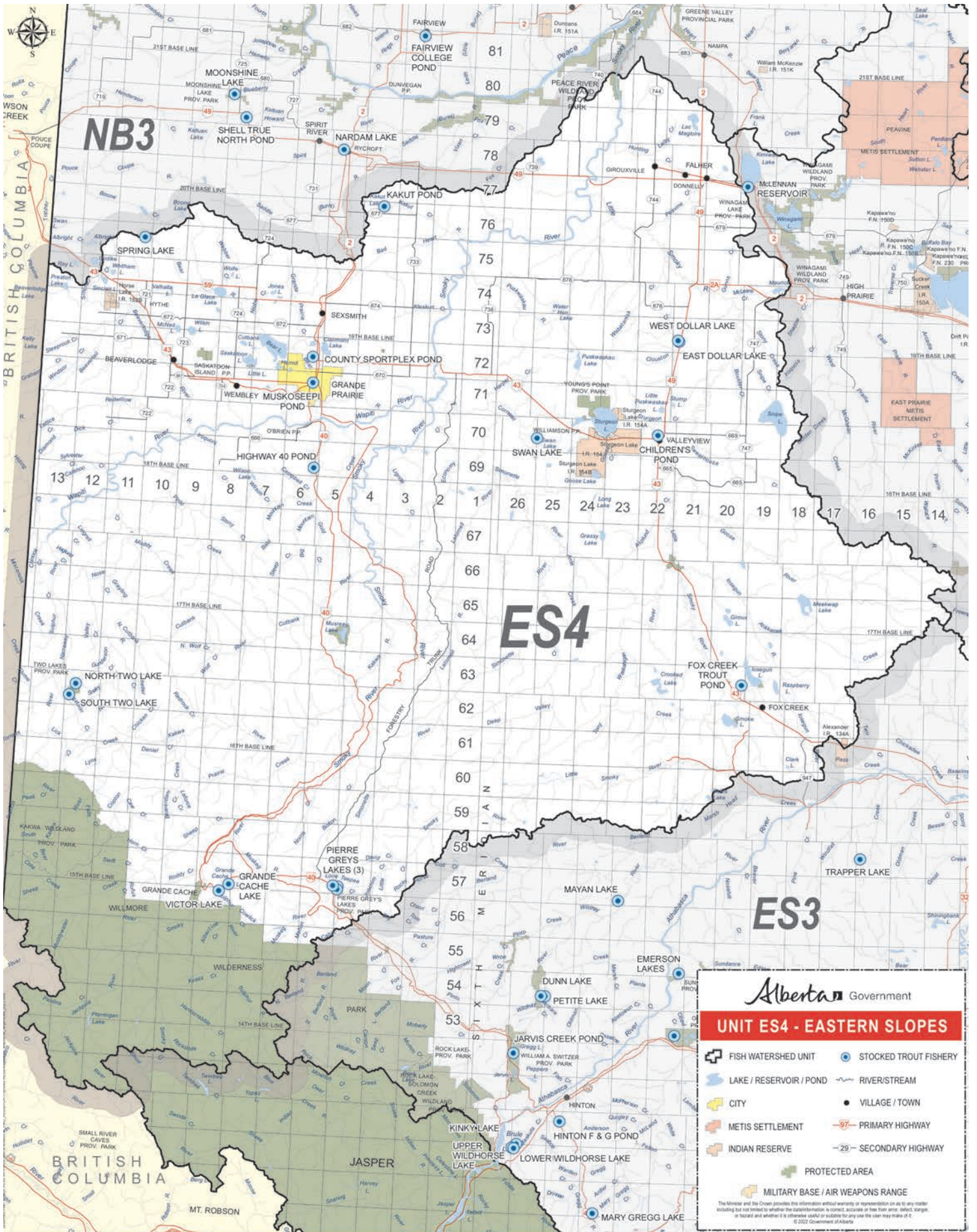
[www.aheia.com](http://www.aheia.com)

Go to our website and click "online training" to launch either program, view demos or sign up.

**Online Hunter Education Certification**

- The Role of the Hunter
- Hunting Ethics
- Wildlife Management Conservation
- Wildlife Identification
- Clothing & Equipment
- Legal Responsibilities
- Bow Hunting
- Survival
- Field Techniques
- First Aid
- Hypothermia
- Firearms





**NB3**

**ES4**

**ES3**

Alberta Government

**UNIT ES4 - EASTERN SLOPES**

-  FISH WATERSHED UNIT
-  STOCKED TROUT FISHERY
-  LAKE / RESERVOIR / POND
-  RIVER/STREAM
-  CITY
-  VILLAGE / TOWN
-  METIS SETTLEMENT
-  PRIMARY HIGHWAY
-  INDIAN RESERVE
-  SECONDARY HIGHWAY
-  PROTECTED AREA
-  MILITARY BASE / AIR WEAPONS RANGE

The Minister and the Crown provides this information without warranty or representation as to its accuracy or reliability. It is provided for informational purposes only. It is not intended to be used for any other purpose. © 2022 Government of Alberta