

# ZONE 1 Eastern Slopes

■ The Eastern Slopes consists of the mountains and foothills that form the “Eastern Slopes” along the Rocky Mountains from Montana to the Grande Prairie region. Throughout this zone, tributary creeks flow into larger streams and into major rivers. These watersheds support numerous trout and mountain whitefish populations, as well as Arctic grayling populations in the north.

The Eastern Slopes four Watershed Units are the Oldman and Bow rivers (ES1), the Red Deer and North Saskatchewan rivers (ES2), the Athabasca and Pembina rivers (ES3) and the Smoky River (ES4).

## ES1 WATERSHED UNIT REGULATIONS

■ the Oldman River watershed upstream of Secondary Road 509 near Coalhurst and the Bow River watershed upstream of Highway 24 near Carseland.

### BAIT FISHING

- Fishing with Bait in ES1 streams is **NOT** allowed.
- Fishing with Bait is allowed at lakes without bait bans. Check the ES1 regulation tables for site specific regulations.
- Fishing with Bait Fish is **NOT** allowed in ES1 except at the following waters: Payne (Mami) Lake, Lees Lake, and Ghost Reservoir.

**Alberta Fish and Wildlife may implement time of day angling restrictions in this watershed unit in response to low stream flows and warmer water temperatures. Please see the Important Information page and My Wild Alberta webpage for more information.**

**Ice fishing:** Angling is not permitted through the ice; a) into beaver ponds or b) into flowing waters in ES1

**Mainstem of a river:** includes the mainstem channel and any side channel, oxbows, riparian flow channels, and plunge pools below spillways.

### ES1 Default Sportfishing Regulations

- The names of most ES1 lakes and streams are listed alphabetically in the site specific regulation tables on the following pages.
- Smaller streams may not be listed, but may be included as tributaries to a listed larger stream.
- If a listed waterbody does not have a season listed, it is **CLOSED** to fishing during that period.
- If a ES1 lake, reservoir, river, stream or species is not listed, follow the default regulations below.
- General regulation stocked trout lakes are listed on page 16.

LAKES	STREAMS		
<ul style="list-style-type: none"> <li>• <b>OPEN all year</b></li> <li>• <b>Bull Trout limit 0</b></li> <li>• <b>Arctic Grayling limit 0</b></li> <li>• Trout limit 5</li> <li>• Mountain Whitefish limit 5 over 30 cm</li> <li>• Walleye limit 3 over 50 cm</li> <li>• Pike limit 3</li> <li>• Perch limit 15</li> <li>• Lake Whitefish limit 10</li> <li>• Burbot limit 10</li> <li>• <b>Bait except Bait Fish allowed</b></li> </ul>	<ul style="list-style-type: none"> <li>• <b>OPEN June 16 to Aug. 31</b></li> <li>• <b>Bull Trout limit 0</b></li> <li>• <b>Arctic Grayling limit 0</b></li> <li>• Trout limit 2</li> <li>• Cutthroat and Rainbow over 35 cm</li> <li>• Mountain Whitefish limit 5 over 30 cm</li> <li>• Walleye limit 3 over 50 cm</li> <li>• Northern Pike limit 3</li> <li>• Yellow Perch limit 15</li> <li>• Lake Whitefish limit 10</li> <li>• Burbot limit 10</li> <li>• <b>Bait Ban</b></li> </ul>	<ul style="list-style-type: none"> <li>• <b>OPEN Sept. 1 to Oct. 31</b></li> <li>• <b>Bull Trout limit 0</b></li> <li>• <b>Arctic Grayling limit 0</b></li> <li>• Trout and Mountain Whitefish limit 0</li> <li>• Walleye limit 3 over 50 cm</li> <li>• Northern Pike limit 3</li> <li>• Yellow Perch limit 15</li> <li>• Lake Whitefish limit 10</li> <li>• Burbot limit 10</li> <li>• <b>Bait Ban</b></li> </ul>	<ul style="list-style-type: none"> <li>• <b>CLOSED Nov. 1 to June 15</b></li> </ul>

**the fishin' hole**

Visit us online or call toll free:  
[thefishinhole.com](http://thefishinhole.com)  
 1.800.661.6954

Visit us at our retail stores in:  
 Edmonton, Saskatoon,  
 Winnipeg & Calgary

100% OWNED – SINCE 1975

THEFISHINHOLECANADA THEFISHINHOLECA

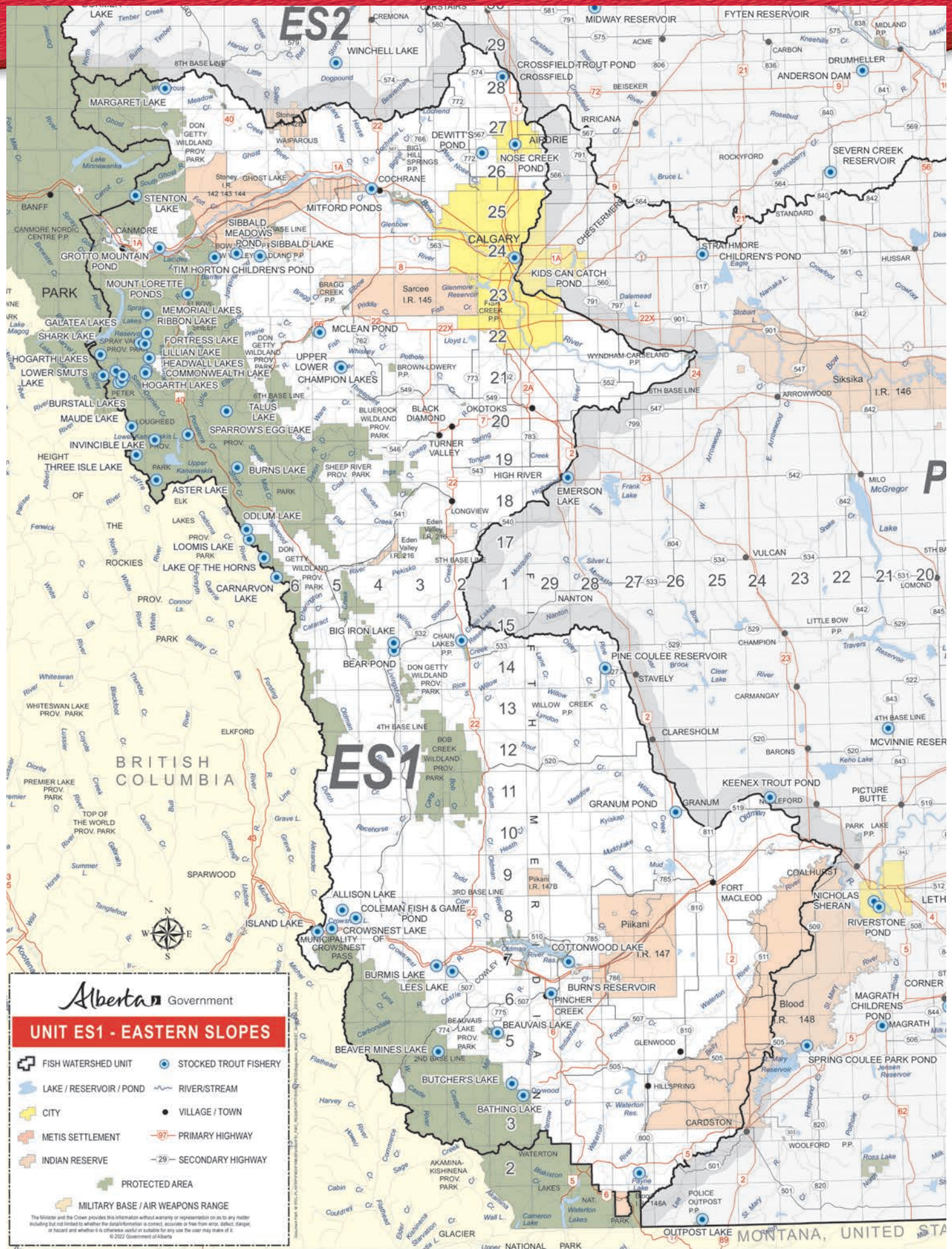
**There's a limit on that**

Exceeding your catch limit is a crime

**REPORT A POACHER**

[www.reportapoacher.com](http://www.reportapoacher.com)  
 1-800-642-3800





**ES2**

**ES1**

BRITISH COLUMBIA

MONTANA, UNITED STATES

**Alberta** Government

**UNIT ES1 - EASTERN SLOPES**


The Minister and the Crown provides this information without warranty or representation as to its accuracy including but not limited to whether the geographical information is correct, accurate or free from error, defect, damage, or hazard and whether it is otherwise suitable or suitable for any use the user may make of it.  
© 2022 Government of Alberta