

NB4 WATERSHED UNIT REGULATIONS

■ The Athabasca River watershed downstream of the north boundary of Township 78 (near Pelican River), including the Clearwater River and Christina River watersheds, and the Slave River and Lake Athabasca watersheds, including the lakes and streams north of Lake Athabasca.

BAIT FISHING

- Fishing with Bait, including Bait Fish, in NB4 lakes and streams is allowed except at locations with Bait Bans listed under site specific regulations.

Mainstem of a river: includes the mainstem channel and any side channel, oxbows, riparian flow channels, and plunge pools below spillways.

NB4 Default Sportfishing Regulations

- The names of most NB4 lakes and streams are listed alphabetically in the site specific regulation tables on the following pages.
- Smaller streams may not be listed, but may be included as tributaries to a listed larger stream.
- If a listed waterbody does not have a season listed, it is CLOSED to fishing during that period.
- If a NB4 lake, reservoir, river, stream or species is not listed, follow the default regulations below.
- General regulation stocked trout lakes are listed on page 16.

LAKES	<ul style="list-style-type: none"> • OPEN May 15 to Mar. 31 • Arctic Grayling limit 0 • Walleye limit 3 over 50 cm • Northern Pike limit 3 over 63 cm • Yellow Perch limit 15 • Lake Whitefish limit 10 • Burbot limit 10 • Trout limit 3 • Bait allowed 	<ul style="list-style-type: none"> • CLOSED Apr. 1 to May 14
STREAMS	<ul style="list-style-type: none"> • OPEN June 1 to Oct. 31 • Arctic Grayling limit 0 • Walleye limit 3 over 50 cm • Northern Pike limit 3 over 63 cm • Mountain Whitefish limit 5 over 30 cm • Yellow Perch limit 15 • Lake Whitefish limit 10 • Burbot limit 10 • Bait allowed 	<ul style="list-style-type: none"> • CLOSED Nov. 1 to May 31

Andrew Lake Lodge & Camps

- Alberta & NWT
- No Roads, No Trails, No Cutlines
- Fly-in Only
- Lodge and Outpost Camps
- Pike, Lake Trout, Walleye, Arctic Grayling

3 Day Fishing Packages Alberta
\$1095 w/ flights from Fort Smith
\$1995 w/ flights from Fort Mac
 • Extra days from \$200 each

Andrew Lake • South Leland Lake • Lynx Lake



www.AndrewLakeLodge.com
780-722-5062
 dan@andrewlakelodge.com

the fishin' hole

Visit us online or call toll free:
thefishinhole.com
 1.800.661.6954

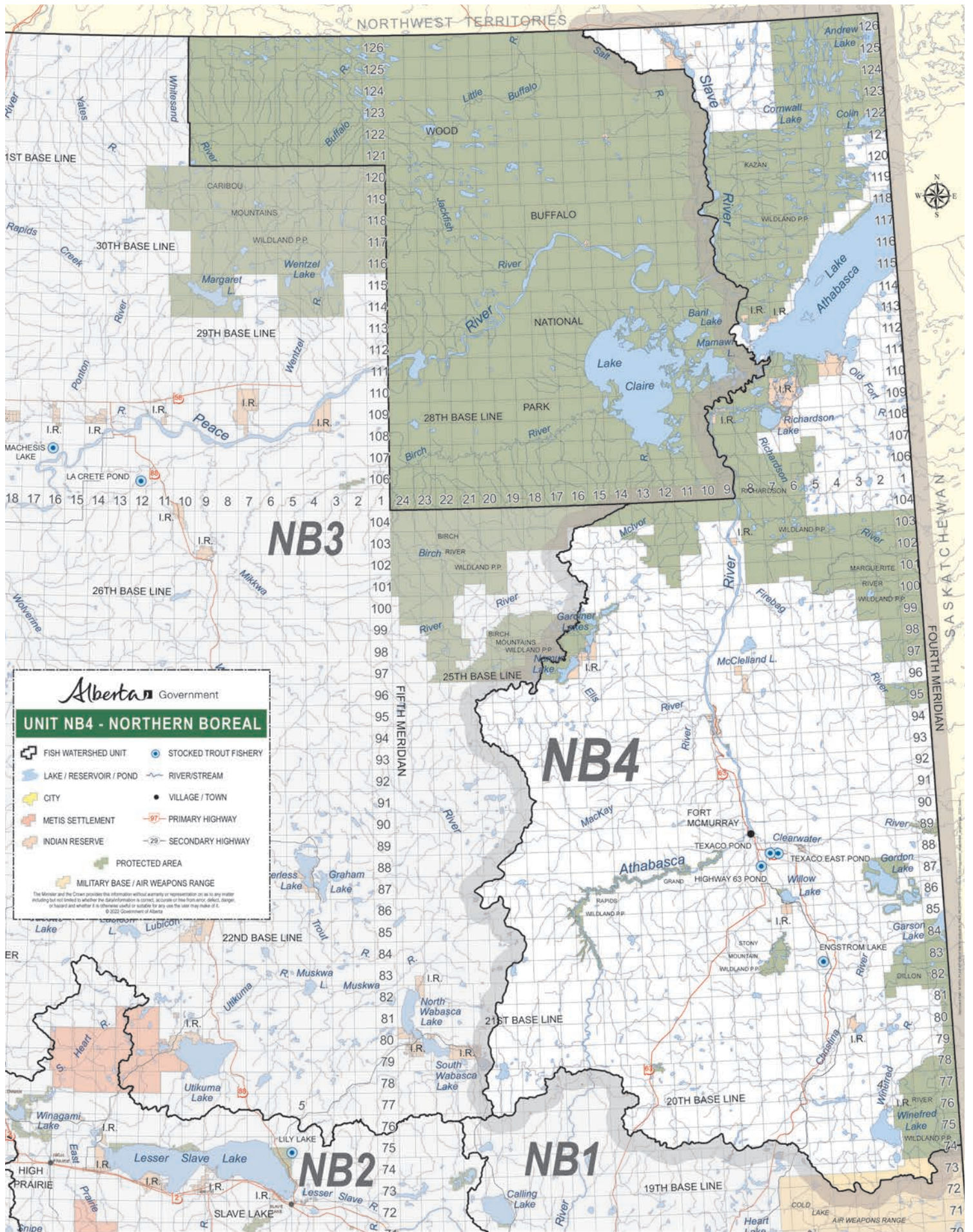
Visit us at our retail stores in:
 Edmonton, Saskatoon,
 Winnipeg & Calgary

100% OWNED - SINCE 1975 THEFISHINHOLECANADA THEFISHINHOLECA

Know the regulations

Not knowing is not an excuse
 Fish responsibly

REPORT A POACHER
www.reportapoacher.com
 1-800-642-3800



NB3

NB4

NB2

NB1

SASKATCHEWAN

FOURTH MERIDIAN

FIFTH MERIDIAN

SIXTH MERIDIAN

SEVENTH MERIDIAN



NORTHWEST TERRITORIES

1ST BASE LINE

30TH BASE LINE

29TH BASE LINE

28TH BASE LINE

26TH BASE LINE

25TH BASE LINE

22ND BASE LINE

21ST BASE LINE

20TH BASE LINE

19TH BASE LINE

ER

HIGH PRAIRIE

Shine

126
125
124
123
122
121
120
119
118
117
116
115
114
113
112
111
110
109
108
107
106
105
104
103
102
101
100
99
98
97
96
95
94
93
92
91
90
89
88
87
86
85
84
83
82
81
80
79
78
77
76
75
74
73
72
71
70

24
23
22
21
20
19
18
17
16
15
14
13
12
11
10
9

18
17
16
15
14
13
12
11
10
9
8
7
6
5
4
3
2
1

6
5
4
3
2
1

α