

ES3 WATERSHED UNIT REGULATIONS

■ The Athabasca River watershed upstream of Secondary Road 658 near Whitecourt, and the Pembina River watershed upstream of Highway 43 near Sangudo.

BAIT FISHING

- Fishing with Bait in ES3 streams is restricted. Check the ES3 site specific regulations and default regulations for details.
- Fishing with Bait is allowed at lakes without Bait Bans. Check the ES3 regulation tables for site specific regulations.

Alberta Fish and Wildlife may announce short-term emergency stream closures in response to low stream flows and warmer water temperatures. Sportfishing would be suspended and fishing not allowed for the duration of the emergency period.

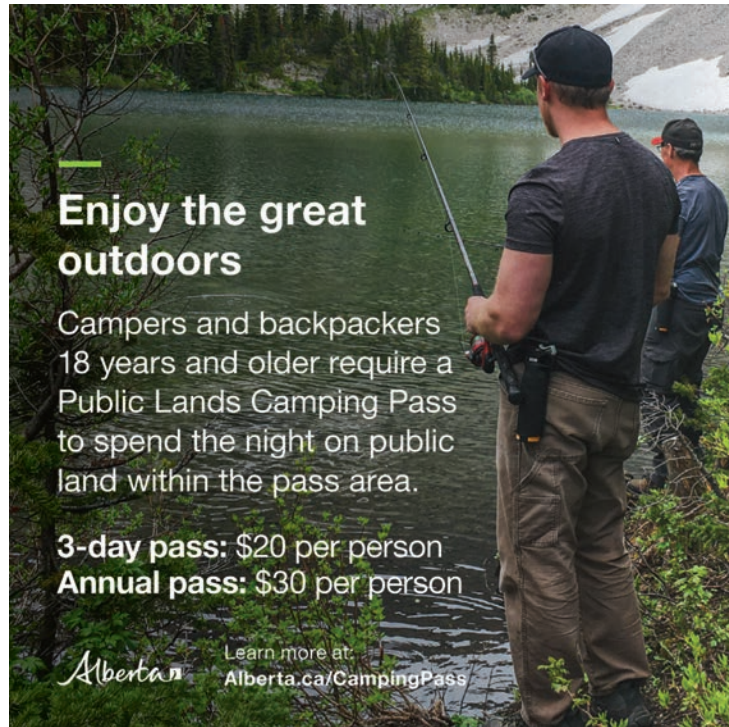
Ice fishing: Angling is not permitted through the ice; a) into beaver ponds or b) into flowing waters in ES3 except the portion of the Lobstick River lying in 53, 54-9, 10-W5 (Open June 16 to Oct. 31)

Mainstem of a river: includes the mainstem channel and any side channel, oxbows, riparian flow channels, and plunge pools below spillways.

ES3 Default Sportfishing Regulations

- The names of most ES3 lakes and streams are listed alphabetically in the site specific regulation tables on the following pages.
- Smaller streams may not be listed, but may be included as tributaries to a listed larger stream.
- If a listed waterbody does not have a season listed, it is CLOSED to fishing during that period.
- If a ES3 lake, reservoir, river, stream or species is not listed, follow the default regulations below.
- General regulation stocked trout lakes are listed on page 16.

LAKES	STREAMS		
<ul style="list-style-type: none"> • OPEN all year • Bull Trout limit 0 • Arctic Grayling limit 0 • Trout limit 5 • Mountain Whitefish limit 5 over 30 cm • Walleye limit 3 over 50 cm • Northern Pike limit 3 • Yellow Perch limit 15 • Lake Whitefish limit 10 • Burbot limit 10 • Bait except bait fish allowed 	<ul style="list-style-type: none"> • OPEN June 16 to Aug. 31 • Athabasca Rainbow and Bull Trout limit 0 • Arctic Grayling limit 0 • Other Trout limit 2 • Mountain Whitefish limit 5 over 30 cm • Walleye limit 3 over 50 cm • Northern Pike limit 3 over 63 cm • Yellow Perch limit 15 • Lake Whitefish limit 10 • Burbot limit 10 • Bait Ban 	<ul style="list-style-type: none"> • OPEN Sept. 1 to Oct. 31 • Athabasca Rainbow and Bull Trout limit 0 • Other Trout, Arctic Grayling and Mountain Whitefish limit 0 • Walleye limit 3 over 50 cm • Northern Pike limit 3 over 63 cm • Yellow Perch limit 15 • Lake Whitefish limit 10 • Burbot limit 10 • Bait Ban 	<ul style="list-style-type: none"> • CLOSED Nov. 1 to June 15



Enjoy the great outdoors

Campers and backpackers 18 years and older require a Public Lands Camping Pass to spend the night on public land within the pass area.

3-day pass: \$20 per person
Annual pass: \$30 per person

Learn more at:
Alberta.ca/CampingPass



the fishin' hole

Visit us online or call toll free:
thefishinhole.com
 1.800.661.6954

Visit us at our retail stores in:
 Edmonton, Saskatoon,
 Winnipeg & Calgary

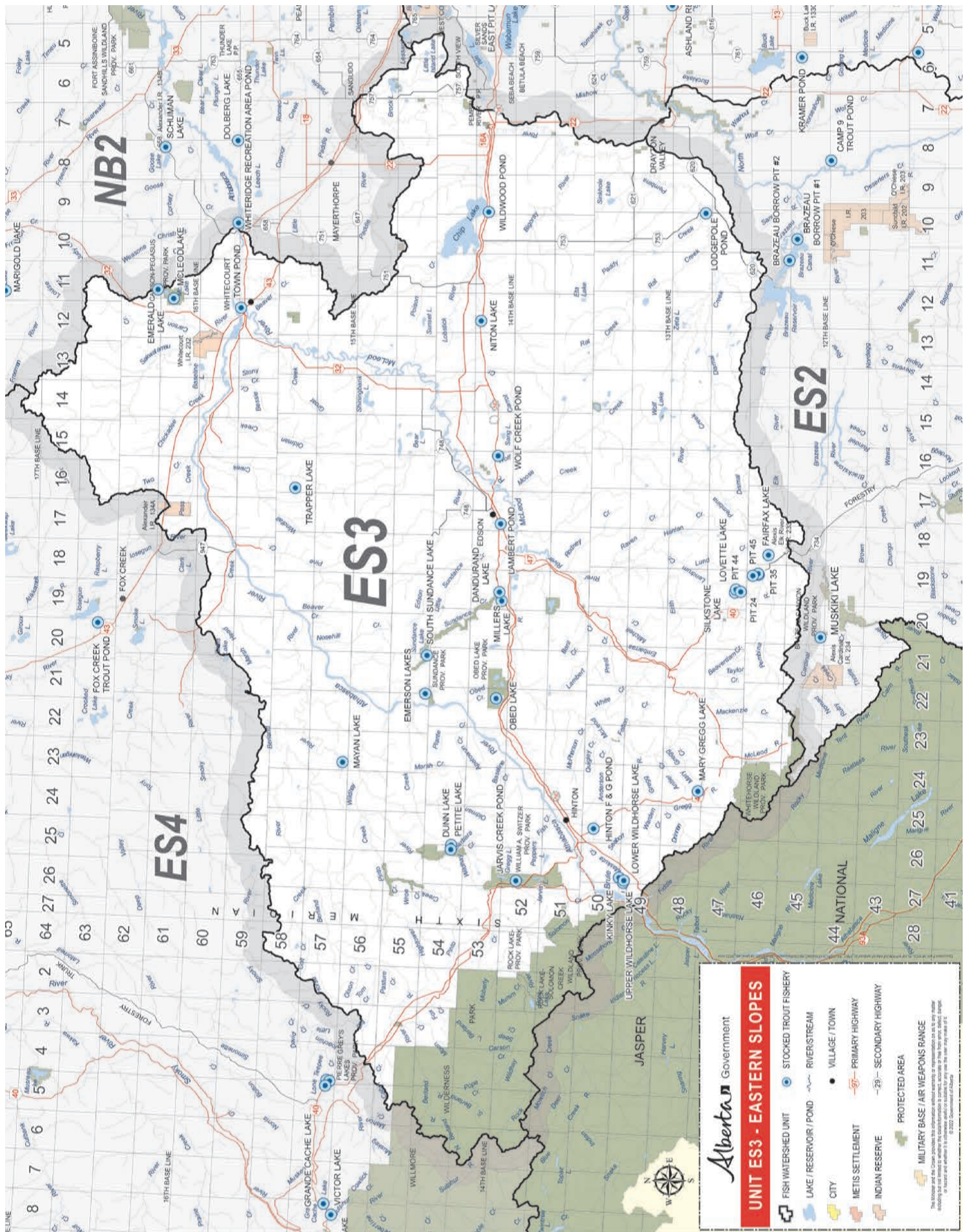
100%  OWNED – SINCE 1975  THEFISHINHOLECANADA  THEFISHINHOLECA



REPORT A POACHER
www.reportapoacher.com
 1-800-642-3800

Online 24/7

www.reportapoacher.com



Alberta Government

UNIT ES3 - EASTERN SLOPES

- FISH WATERSHED UNIT
- STOCKED TROUT FISHERY
- LAKE / RESERVOIR / POND
- RIVERS/STREAM
- CITY
- VILLAGE / TOWN
- METIS SETTLEMENT
- PRIMARY HIGHWAY
- SECONDARY HIGHWAY
- INDIAN RESERVE
- PROTECTED AREA
- MILITARY BASE / AIR WEAPONS RANGE

This map is for information only. It is not intended to be used as a legal document. The Government of Alberta is not responsible for any errors or omissions. © 2020