

# ES2 WATERSHED UNIT REGULATIONS

■ The Red Deer River watershed upstream of the Dickson Dam west of Innisfail and the North Saskatchewan River watershed upstream of Highway 22/39 near Drayton Valley.

## BAIT FISHING

- Fishing with bait in ES2 streams is **NOT** allowed.
- Fishing with Bait is allowed at lakes without Bait Bans. Check the ES2 regulation tables for site specific regulations.
- Fishing with Bait Fish is **NOT** allowed in ES2 except at the following waterbodies: Burnstick Lake, Brazeau Canal, Cow Lake, Jackfish Lake and Glennifer (Reservoir) Lake.

Alberta Fish and Wildlife may announce short-term emergency stream closures in response to low stream flows and warmer water temperatures. Sportfishing would be suspended and fishing not allowed for the duration of the emergency period.

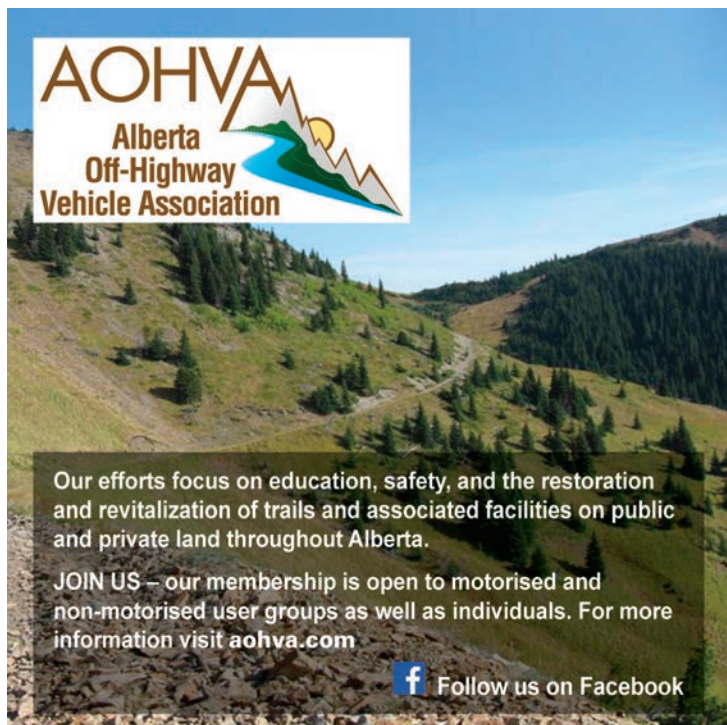
**Ice fishing:** Angling is not permitted through the ice; a) into beaver ponds or b) into flowing waters in ES2

**Mainstem of a river:** includes the mainstem channel and any side channel, oxbows, riparian flow channels, and plunge pools below spillways.

## ES2 Default Sportfishing Regulations

- The names of most ES2 lakes and streams are listed alphabetically in the site specific regulation tables on the following pages.
- Smaller streams may not be listed, but may be included as tributaries to a listed larger stream.
- If a listed waterbody does not have a season listed, it is CLOSED to fishing during that period.
- If a ES2 lake, reservoir, river, stream or species is not listed, follow the default regulations below.
- General regulation stocked trout lakes are listed on page 16.


LAKES	<ul style="list-style-type: none"> <li>• OPEN all year</li> <li>• Bull Trout limit 0</li> <li>• Arctic Grayling limit 0</li> <li>• Trout limit 5</li> <li>• Walleye limit 3 over 50 cm</li> <li>• Northern Pike limit 3</li> <li>• Perch limit 15</li> <li>• Mountain Whitefish limit 5 over 30 cm</li> <li>• Burbot limit 10</li> <li>• Bait except bait fish allowed</li> </ul>		
STREAMS	<ul style="list-style-type: none"> <li>• OPEN Apr. 1 to Aug. 31</li> <li>• Bull Trout limit 0</li> <li>• Arctic Grayling limit 0</li> <li>• Trout limit 2</li> <li>• Cutthroat over 35 cm</li> <li>• Mountain Whitefish limit 5 over 30 cm</li> <li>• Walleye limit 3 over 50 cm</li> <li>• Northern Pike limit 3</li> <li>• Yellow Perch limit 15</li> <li>• Burbot limit 10</li> <li>• Bait Ban</li> </ul>	<ul style="list-style-type: none"> <li>• OPEN Sept. 1 to Oct. 31</li> <li>• Bull Trout limit 0</li> <li>• Arctic Grayling limit 0</li> <li>• Trout and Mountain Whitefish limit 0</li> <li>• Walleye limit 3 over 50 cm</li> <li>• Northern Pike limit 3</li> <li>• Yellow Perch limit 15</li> <li>• Burbot limit 10</li> <li>• Bait Ban</li> </ul>	<ul style="list-style-type: none"> <li>• CLOSED Nov. 1 to Mar. 31</li> </ul>



**AOHVA**  
Alberta  
Off-Highway  
Vehicle Association

Our efforts focus on education, safety, and the restoration and revitalization of trails and associated facilities on public and private land throughout Alberta.

JOIN US – our membership is open to motorised and non-motorised user groups as well as individuals. For more information visit [aohva.com](http://aohva.com)

 Follow us on Facebook



**the fishin' hole**

Visit us online or call toll free:  
[thefishinhole.com](http://thefishinhole.com)  
1.800.661.6954

Visit us at our retail stores in:  
Edmonton, Saskatoon,  
Winnipeg & Calgary

100%  OWNED – SINCE 1975

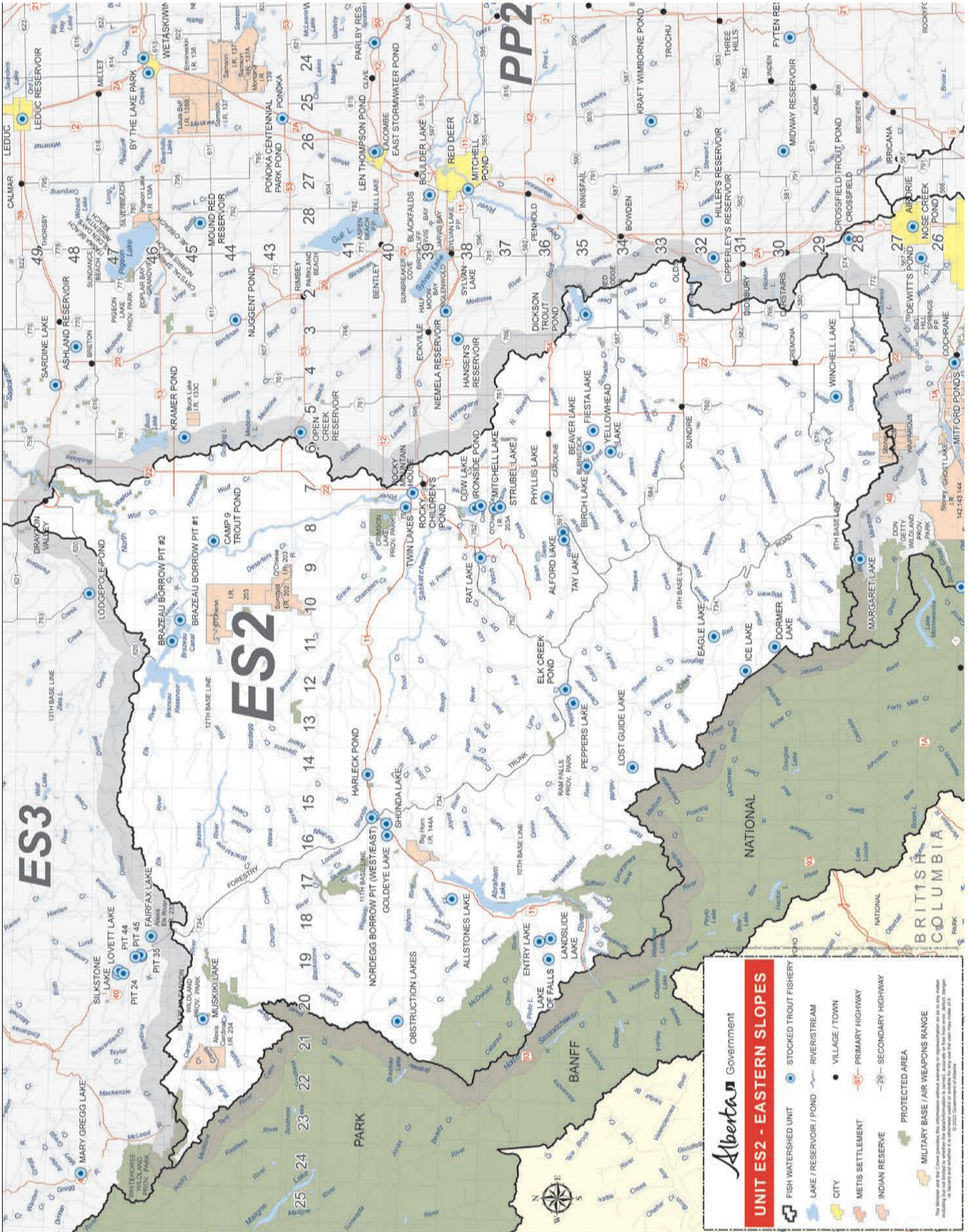
 THEFISHINHOLECANADA  THEFISHINHOLECA



**outdoorsforum.ca**

Where Alberta's Outdoorsmen and Women hang their hats

**ALBERTA OUTDOORS**  
Formerly Alberta Outdoorsmen



**Alberta** Government

**UNIT ES2 - EASTERN SLOPES**

- FISH WATERSHED UNIT
- LAKE / RESERVOIR / POND
- CITY
- METIS SETTLEMENT
- INDIAN RESERVE
- PROTECTED AREA
- MILITARY BASE / AIR WEAPONS RANGE
- STOCKED TROUT FISHERY
- RIVER/STREAM
- VILLAGE / TOWN
- PRIMARY HIGHWAY
- SECONDARY HIGHWAY

The names and the Crown symbols for municipalities, Indian reserves and other locations are for information only. The names of the municipalities, Indian reserves and other locations are for information only. The names of the municipalities, Indian reserves and other locations are for information only.