

PP2 WATERSHED UNIT REGULATIONS

■ The Red Deer River watershed downstream of the Dickson Dam west of Innisfail, the Battle River watershed, and the North Saskatchewan River watershed downstream of Highway 22/39 near Drayton Valley, excluding tributary watersheds entering on the left (north) bank downstream of Highway 38 near Redwater (NOTE: The boundary between the Parkland-Prairie and Northern Boreal zones follows the north terrace and river break along the North Saskatchewan River valley).

BAIT FISHING

- Fishing with Bait, including Bait Fish, in PP2 lakes and streams is allowed except at locations listed with Bait Bans under site specific regulations.

Mainstem of a river: includes the mainstem channel and any side channel, oxbows, riparian flow channels, and plunge pools below spillways.

PP2 Default Sportfishing Regulations

- The names of most PP2 lakes and streams are listed alphabetically in the site specific regulation tables on the following pages.
- Smaller streams may not be listed, but may be included as tributaries to a listed larger stream.
- If a listed waterbody does not have a season listed, it is CLOSED to fishing during that period.
- If a PP2 lake, reservoir, river, stream or species is not listed, follow the default regulations below.
- General regulation stocked trout lakes are listed on page 16.

LAKES	<ul style="list-style-type: none"> • OPEN all year • Walleye limit 3 over 50 cm • Northern Pike limit 3 over 63 cm • Yellow Perch limit 15 • Lake Whitefish limit 10 • Burbot limit 2 (Burbot limit 0 Feb. 1 to Mar. 31) • Trout limit 5 • Mountain Whitefish limit 5 over 30 cm • Bait allowed 	
STREAMS	<ul style="list-style-type: none"> • OPEN May 15 to Mar. 31 • Lake Sturgeon limit 0 • Walleye and Sauger limit 3 • Walleye over 50 cm • Northern Pike limit 3 over 63 cm • Trout limit 2 • Mountain Whitefish limit 5 over 30 cm • Yellow Perch limit 15 • Lake Whitefish limit 10 • Burbot limit 2 (Burbot limit 0 Feb. 1 to Mar. 31) • Goldeye limit 10 • Bait allowed 	<ul style="list-style-type: none"> • CLOSED Apr. 1 to May 14



Pleasure Craft Operator Training

BOATING SAFETY INSTRUCTION PRESENTED BY



Now Available Online at
www.albertaboatsafety.com

Are you interested in obtaining your Pleasure Craft Operator Card?

AHEIA is proud to announce that it is now accredited by Transport Canada to provide this licence's required instruction.

Responsibilities • Equipment Requirements • Safety Flags & Signals
Canadian Water Laws & Regulations • General Boat Operations Tips

This card is valid nationwide and never expires!

Contact us today for more information.


AHEIA Calgary 1-866-852-4342	AHEIA Edmonton 1-866-282-4342
--	---

www.aheia.com



The Sportsmen's Den

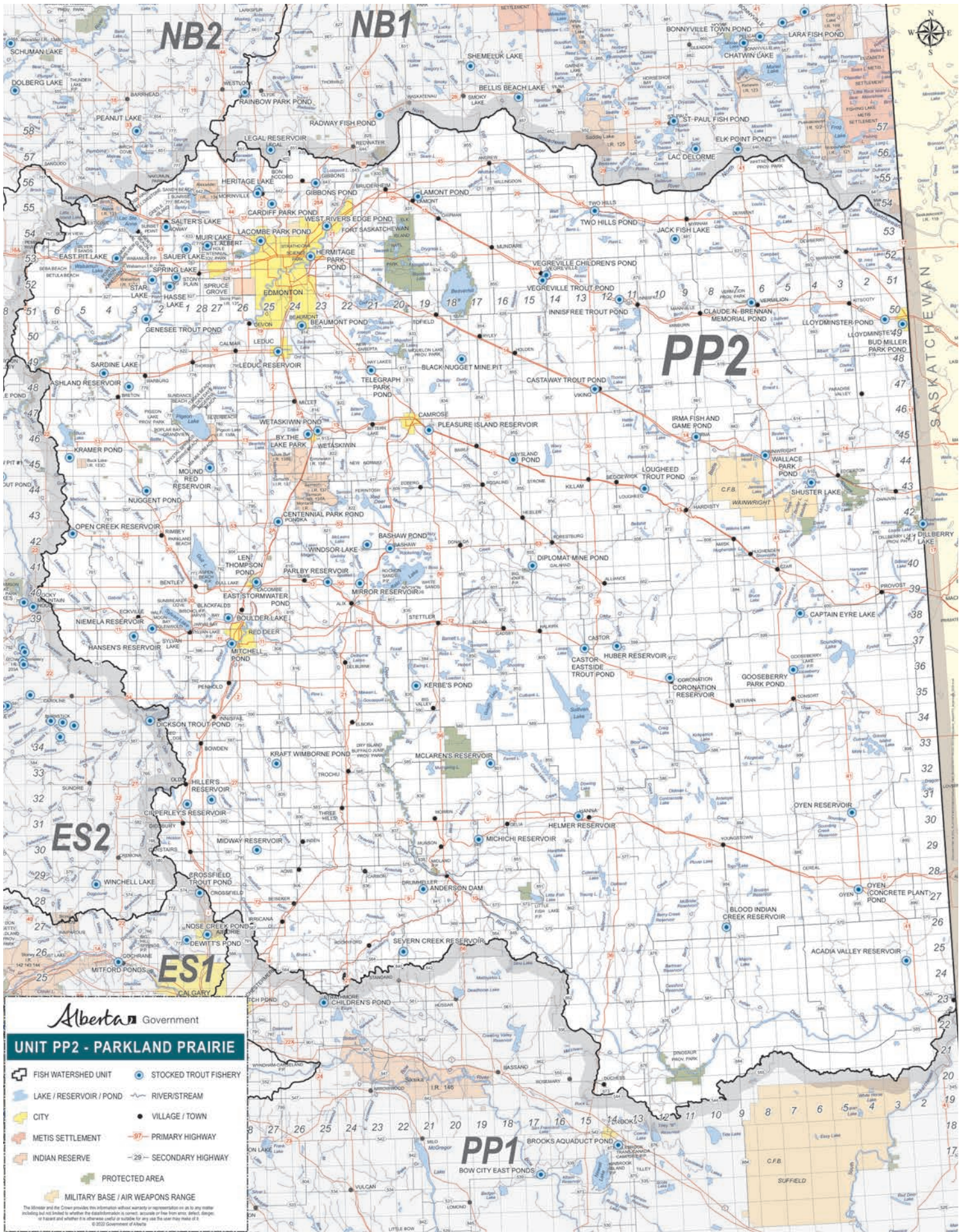
Red Deer's One Stop Outdoor Shop!



- Waders
- Rods
- Reels
- Lures & Flies
- Guns
- Ammunition
- Camo Clothing
- Licences
- Camping Gear

"Everything for the Sportsman"

Bay 6, 7667 Gaetz Avenue, Red Deer
1-403-347-7678



NB2

NB1

PP2

ES2

ES1

PP1

SASKATCHEWAN



Alberta Government

UNIT PP2 - PARKLAND PRAIRIE

- FISH WATERSHED UNIT
- STOCKED TROUT FISHERY
- LAKE / RESERVOIR / POND
- RIVER / STREAM
- CITY
- VILLAGE / TOWN
- METIS SETTLEMENT
- INDIAN RESERVE
- PROTECTED AREA
- MILITARY BASE / AIR WEAPONS RANGE

The Minister and the Crown provide this information without warranty or representation as to its accuracy including but not limited to whether the data/information is current, accurate or free from error, damage or fraud and whether it is otherwise useful or suitable for any use the user may make of it. © 2023 Government of Alberta.