

# ES3 WATERSHED UNIT REGULATIONS

■ The Athabasca River watershed upstream of Secondary Road 658 near Whitecourt, and the Pembina River watershed upstream of Highway 43 near Sangudo.

## BAIT FISHING

- Fishing with Bait in ES3 streams is restricted. Check the ES3 site specific regulations and default regulations for details.
- Fishing with Bait is allowed at lakes without Bait Bans. Check the ES3 regulation tables for site specific regulations.

Alberta Fish and Wildlife may announce short-term emergency stream closures in response to low stream flows and warmer water temperatures. Sportfishing would be suspended and fishing not allowed for the duration of the emergency period.

**Ice fishing:** Angling is not permitted through the ice; a) into beaver ponds or b) into flowing waters in ES3 except the portion of the Lobstick River lying in 53, 54-9, 10-W5 (Open June 16 to Oct. 31)

**Mainstem of a river:** includes the mainstem channel and any side channel, oxbows, riparian flow channels, and plunge pools below spillways.

### ES3 Default Sportfishing Regulations

- The names of most ES3 lakes and streams are listed alphabetically in the site specific regulation tables on the following pages.
- Smaller streams may not be listed, but may be included as tributaries to a listed larger stream.
- If a listed waterbody does not have a season listed, it is CLOSED to fishing during that period.
- If a ES3 lake, reservoir, river, stream or species is not listed, follow the default regulations below.
- General regulation stocked trout lakes are listed on page 16.

LAKES	REGULATIONS	SEASONS
	<ul style="list-style-type: none"> <li>• OPEN all year</li> <li>• Bull Trout limit 0</li> <li>• Arctic Grayling limit 0</li> <li>• Trout limit 5</li> <li>• Mountain Whitefish limit 5 over 30 cm</li> <li>• Walleye limit 3 over 50 cm</li> <li>• Northern Pike limit 3</li> <li>• Yellow Perch limit 15</li> <li>• Lake Whitefish limit 10</li> <li>• Burbot limit 10</li> <li>• Bait except bait fish allowed</li> </ul>	
STREAMS	<ul style="list-style-type: none"> <li>• OPEN June 16 to Aug. 31</li> <li>• Athabasca Rainbow and Bull Trout limit 0</li> <li>• Arctic Grayling limit 0</li> <li>• Other Trout limit 2</li> <li>• Mountain Whitefish limit 5 over 30 cm</li> <li>• Walleye limit 3 over 50 cm</li> <li>• Northern Pike limit 3 over 63 cm</li> <li>• Yellow Perch limit 15</li> <li>• Lake Whitefish limit 10</li> <li>• Burbot limit 10</li> <li>• Bait Ban</li> </ul>	<ul style="list-style-type: none"> <li>• OPEN Sept. 1 to Oct. 31</li> <li>• Athabasca Rainbow and Bull Trout limit 0</li> <li>• Other Trout, Arctic Grayling and Mountain Whitefish limit 0</li> <li>• Walleye limit 3 over 50 cm</li> <li>• Northern Pike limit 3 over 63 cm</li> <li>• Yellow Perch limit 15</li> <li>• Lake Whitefish limit 10</li> <li>• Burbot limit 10</li> <li>• Bait Ban</li> </ul>
		• CLOSED Nov. 1 to June 15

**BRIDEN SOLUTIONS**

CANADA'S OUTDOOR FOOD HEADQUARTERS

PEOK REFUEL BACKPACKER'S PANTRY nutristore MOUNTAIN HOUSE

102 - 127 COMMERCIAL DRIVE CALGARY, AB  
www.BridenSolutions.ca

**the fishin' hole**

Visit us online or call toll free:  
thefishinhole.com  
1.800.661.6954

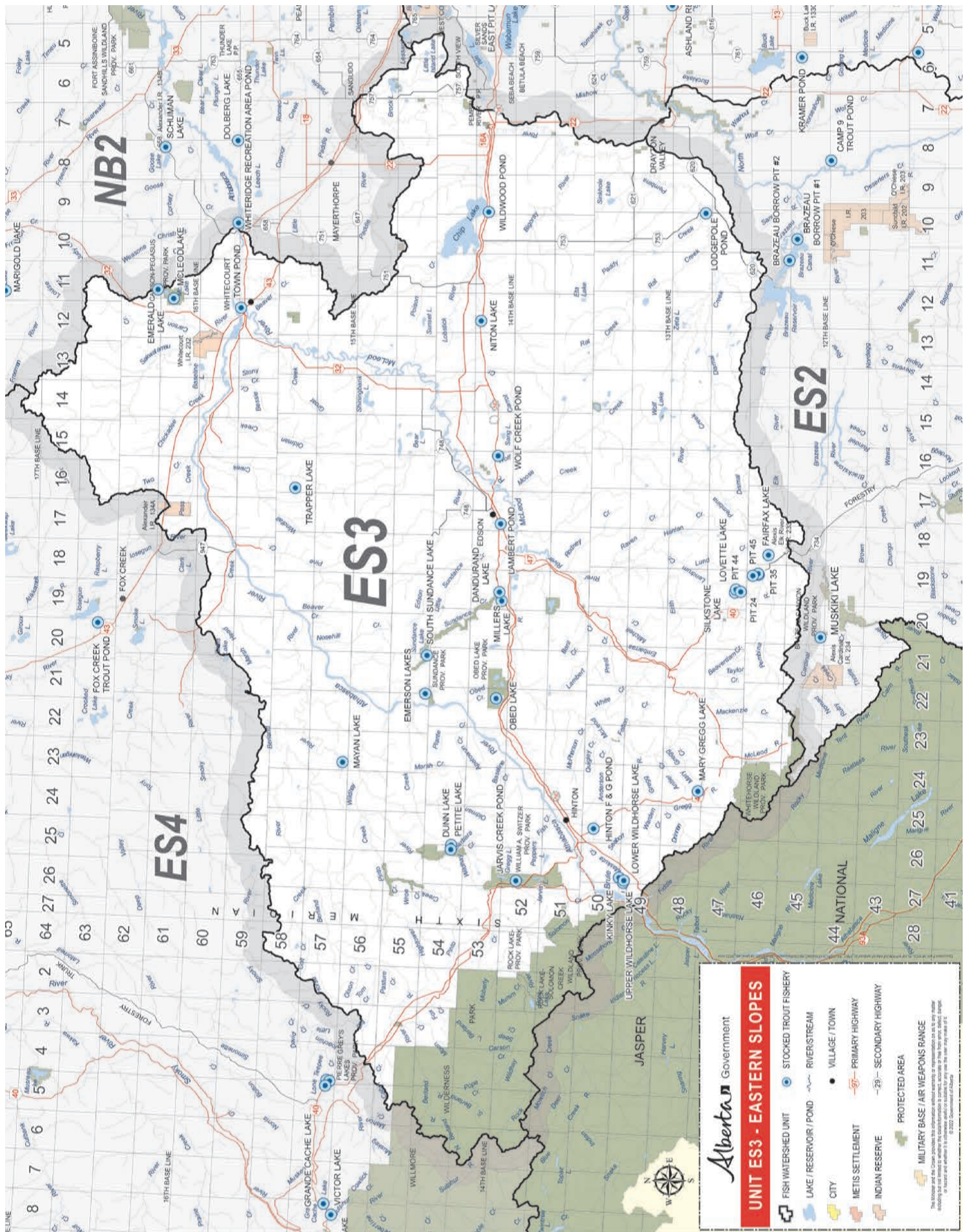
Visit us at our retail stores in:  
Edmonton, Saskatoon,  
Winnipeg & Calgary

100% CANADA OWNED - SINCE 1975

**REPORT A POACHER**  
www.reportapoacher.com  
1-800-642-3800

**Online 24/7**

www.reportapoacher.com



**Alberta** Government

**UNIT ES3 - EASTERN SLOPES**

- FISH WATERSHED UNIT
- STOCKED TROUT FISHERY
- LAKE / RESERVOIR / POND
- RIVERS/STREAM
- CITY
- VILLAGE / TOWN
- METIS SETTLEMENT
- PRIMARY HIGHWAY
- SECONDARY HIGHWAY
- INDIAN RESERVE
- PROTECTED AREA
- MILITARY BASE / AIR WEAPONS RANGE

This map is for information only. It is not intended to be used as a legal document. The Government of Alberta is not responsible for any errors or omissions. © 2020